

Adaptor

SC (PC, APC, Single/Multi-mode), LC (PC, APC, Single/Multi-mode), ST (PC, APC, Single/Multi-mode), FC (PC, APC, Single/Multi-mode), E2000

SC Adaptor

Introducing SC Adaptors from Savitri Telecom Services, designed to provide reliable and improved reconnect ability with high precision alignment sleeves. Whether you're looking for a ceramic sleeve for single mode applications or a phosphor bronze sleeve for multimode applications, these adaptors have got you covered.



In conclusion, SC Adaptors from Savitri Telecom Services are an excellent choice for anyone looking for reliable and high-precision adaptors for their data center, premise installation, or telecommunication network. With their ability to handle both single mode and multimode applications, and various mounting options available, these adaptors are versatile and provide excellent value for money.

Technical Specifications

Sleeve Type	Ceramic sleeve for single mode applications Phosphor Bronze sleeve for multimode applications
Insertion Loss (Typ)	Ceramic Sleeve: 0.1dB Phosphor Bronze Sleeve: 0.15 dB
Mating Durability	500 cycles
Receptacle Retention Force	2N - 5.9N
Operating Temperature	-25°C to +70°C for 12 cycles

Overall, the SC Adaptors from Savitri Telecom Services have high-precision alignment sleeves, are reliable, and are available in different housing colors with various mounting options. They are suitable for both single mode and multimode applications and provide excellent value for money.

KEY FEATURES

- High precision alignment sleeves for reliable and improved reconnect ability.
- Ceramic sleeve for single mode applications and phosphor bronze sleeve for multimode applications.
- Available in different housing colors with options for flange or flangeless body, metal clips or inbuilt clips.

KEY BENEFITS

- Provides excellent precision and reliability for data centers, premise installations, and telecommunication networks.
- Perfect for ATM LAN, MAN, and WAN applications.
- Suitable for both single mode and multimode applications, making them a versatile choice.
- Available in different housing colors with various mounting options to fit your specific needs.

KEY APPLICATIONS

- Data centers
- Premise installations
- Telecommunication networks
- Ethernet
- Fiber channel
- ATM LAN
- MAN and WAN

NOTE: The image is for reference only, actual product may differ based on customer's requirements. We customize products to meet unique specifications and ensure customer satisfaction.

LC Adaptor

Introducing LC Adaptors from Savitri Telecom Services - the perfect solution for improved reliability and better reconnect ability. Our high-precision alignment sleeves ensure low insertion loss and high reconnectability. The adaptors come with ceramic sleeves for single mode and phosphor bronze sleeves for multimode applications. Available in different housing colors with options for flange or flangeless body and metal or inbuilt clips.



Technical Specifications

Sleeve Type	Ceramic sleeve for single mode applications Phosphor Bronze sleeve for multimode applications
Insertion Loss (Typ)	Ceramic Sleeve: 0.1dB Phosphor Bronze Sleeve: 0.15 dB
Mating Durability	500 cycles
Receptacle Retention Force	1N - 2.5N
Operating Temperature	-25°C to +70°C for 12 cycles

KEY FEATURES

- High precision alignment sleeve.
- Low insertion loss and high reconnect ability.
- RoHS, REACH, and SvHC compliant.
- Available in simplex/duplex adaptors.

KEY BENEFITS

- Suitable for telecommunications networks, CATV, LAN, MAN, and WAN applications.
- Ideal for data processing networks, cable television, fiber-to-the-home, and premises distribution.
- Versatile and reliable, with excellent value for money.
- Available in various housing colors and mounting options to fit your specific needs.

Overall, LC Adaptors from Savitri Telecom Services provide a reliable and high-precision solution for your telecommunications and data processing needs. With RoHS, REACH, and SvHC compliance, they are a safe and reliable choice for your network. Available in various housing colors and mounting options, these adaptors provide excellent value for money and are a versatile solution for your networking needs.

NOTE: The image is for reference only, actual product may differ based on customer's requirements. We customize products to meet unique specifications and ensure customer satisfaction.

ST Adaptor

Introducing ST Adaptors from Savitri Telecom Services - the perfect solution for reliable and better reconnectability. Our high-precision alignment sleeves ensure low insertion loss and high reconnectability. The adaptors come with a ceramic sleeve for single mode and a phosphor bronze sleeve for multimode applications. Available in single D or double D types, the housing is designed to fit your specific needs.



Technical Specifications

Sleeve Type	Ceramic sleeve for single mode applications Phosphor Bronze sleeve for multimode applications
Insertion Loss (Typ)	Ceramic Sleeve: 0.1dB Phosphor Bronze Sleeve: 0.15 dB
Mating Durability	500 cycles
Receptacle Retention Force	1N - 2.5N
Operating Temperature	-25°C to +70°C for 12 cycles

KEY FEATURES

- Complies with IEC 61754-20.
- High precision alignment sleeve.
- Low insertion loss and high reconnectability.
- RoHS, REACH, and SvHC compliant.
- Available in simplex only.

KEY BENEFITS

- Suitable for data processing networks and premises distribution.
- Ideal for use in various applications including LAN, MAN, and WAN.
- Versatile and reliable, with excellent value for money.
- Complies with industry standards, ensuring compatibility with your existing network.

Overall, ST Adaptors from Savitri Telecom Services provide a reliable and high-precision solution for your data processing and premises distribution needs. Complying with industry standards, they are compatible with your existing network and provide excellent value for money. Available in various housing types and with RoHS, REACH, and SvHC compliance, these adaptors are a versatile and reliable solution for your networking needs.

FC Adaptor

FC adaptors are designed with precision alignment sleeves for high reliability and better reconnect ability. They are available in ceramic sleeves for single mode applications and phosphor bronze sleeves for multimode applications. The housing has a metal body and an M8 nut for secure installation.



Technical Specifications

Sleeve Type	Ceramic sleeve for single mode applications Phosphor Bronze sleeve for multimode applications
Insertion Loss (Typ)	Ceramic Sleeve: 0.1dB Phosphor Bronze Sleeve: 0.15 dB
Mating Durability	500 cycles
Receptacle Retention Force	2N - 5.9N
Operating Temperature	-25°C to +70°C for 12 cycles

KEY FEATURES

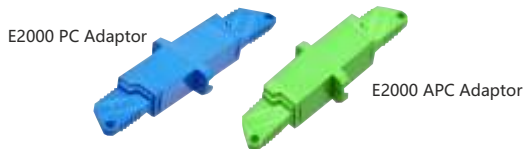
- Precision alignment sleeve for high reliability and improved reconnect ability.
- Low insertion loss and high reconnect ability.
- Narrow key design for easy insertion and removal.
- RoHS, REACH SvHC compliant.
- Available in simplex only.

KEY APPLICATIONS

- Telecommunications networks
- Local area networks
- Data processing networks
- Cable television
- Premises distribution
- Test and laboratory equipment
- Industrial and military applications

E2000 Adaptor

E2000 adaptors have high precision alignment sleeves for improved reliability and better reconnect ability. Each E2000 connector features an inbuilt mechanism that opens the shutter and guides the ferrule into the alignment sleeve for ease of use. E2000 adaptors come with ceramic sleeves for single mode and phosphor bronze sleeves for multimode applications. The housing is available in different colors and flangeless body options.



Technical Specifications

Sleeve Type	Ceramic sleeve for single mode applications Phosphor Bronze sleeve for multimode applications
Insertion Loss (Typ)	Ceramic Sleeve: 0.1dB Phosphor Bronze Sleeve: 0.15 dB
Mating Durability	500 cycles
Receptacle Retention Force	2N - 2.5N
Operating Temperature	-25°C to +70°C for 12 cycles

KEY FEATURES

- High precision alignment sleeve.
- Low insertion loss and high reconnect ability.
- RoHS, REACH, and SvHC compliant.
- Available in simplex only.

KEY BENEFITS

- Suitable for high power laser applications.
- Telecommunications networks.
- WDM, DWDM applications.
- Testing and measurement equipment.

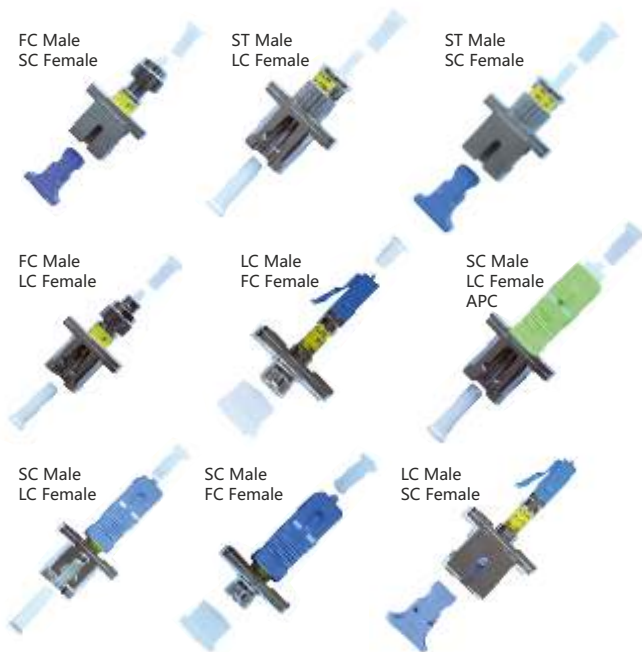
NOTE: The image is for reference only, actual product may differ based on customer's requirements. We customize products to meet unique specifications and ensure customer satisfaction.

Hybrid Adaptor

Hybrid adaptors are designed with precision alignment sleeves for high reliability and better reconnect ability. They are available in ceramic sleeves for single mode applications and phosphor bronze sleeves for multimode applications. The housing has a metal body and an M8 nut for secure installation.

Male to Female Hybrid Adaptor

Male to Female Hybrid adaptors are used for connecting different connectors on either side. They can be used in any application where connectors of different types need to be joined. Savitri Male to Female Hybrid adaptors conform to international standards and are quality tested. Hybrid adaptors are available in single mode and multimode and many different configurations.



Female to Female Hybrid Adaptor

Female to Female Hybrid adaptors are used for connecting different connectors on either side. They are available in metal body options and in blue for single mode and beige for multimode. Savitri Female to Female Hybrid adaptors conform to international standards and are quality tested.



KEY FEATURES

- Complies with IEC, TIA/EIA, Telcordia standards.
- High precision alignment sleeve.
- Low insertion loss and high reconnect ability.
- RoHS, REACH SvHC compliant.
- Available in plastic or metal body.
- Available in blue for single mode and in beige for multi-mode.

KEY APPLICATIONS

- Telecommunications networks
- Local area networks
- Data processing networks
- Cable television
- Premises distribution
- Test and laboratory equipment
- Industrial and military applications

Technical Specifications

Sleeve Type	Ceramic sleeve for single mode applications Phosphor Bronze sleeve for multimode applications
Insertion Loss (Typ)	Ceramic Sleeve: 0.1dB Phosphor Bronze Sleeve: 0.15 dB
Mating Durability	500 cycles
Receptacle Retention Force	2N - 5.9N
Operating Temperature	-25°C to +70°C for 12 cycles

NOTE: The image is for reference only, actual product may differ based on customer's requirements. We customize products to meet unique specifications and ensure customer satisfaction.