

CERTiFi

Cloud-Based Enterprise Workflow Management

CERTiFi is a cloud-based solution for teams who design, build, test, and certify the structured cabling in enterprise networks. Powered by the VIAVI Solutions StrataSync™ platform, CERTiFi empowers every team member with the information needed to complete tasks accurately and on time.

With CERTiFi, team members establish alignment at every stage of their project - from creating design requirements and assigning tasks, to performing tests and analyzing project metrics in real time. Manage your projects with confidence and equip your team to succeed with CERTiFi.

Design > Assign > Test > Analyze



KEY BENEFITS

- Manage your projects with confidence at every stage
- Align your team and project specifications in one place
- Communicate job requirements clearly and in real time
- Track project status and analyze results from anywhere
- Assign tasks directly to team members
- Deploy tasks directly to instruments with the CERTiFi mobile application



Manage Projects with Confidence at Every Stage



Design

- Design and manage multiple projects with a web-based interface
- Define all test requirements, acceptance criteria, and labeling requirements
- Utilize pre-populated vendor specifications or customize your own
- Add attachments including drawings, maps, photos, scope-of-work documents, or AutoCAD files



Assign

- Assign projects to consultants, field technicians, sub-contractors, or other team members
- Download the CERTiFi mobile app on both Android and iOS devices
- Push assignment notifications to team members' mobile devices via CERTiFi mobile app, giving field technicians the ability to:
 - View test requirements, label configuration, and attached files
 - Deploy specific tests to field instruments via wireless connection



Test

- Preload test instruments with tasks and required test criteria such as label lists, acceptance criteria, notes, and more
- Enrich test data with notes, pictures, and videos
- Auto-sync results to the cloud through the mobile device that deployed the task



Analyze

- Provide site leads with real-time test results and project statuses on mobile device
- View progress dashboards and test results from the CERTiFi web interface
- Provide immediate feedback to field technicians throughout the project

Align Your Team and Project Requirements in One Place

Whether a project is big or small, it is essential for each member of the team to understand which tests need to be performed, by whom, when, and where. For project managers, this is an even greater challenge; with constant emails, phone calls, paperwork, file attachments, and more, details can easily get miscommunicated, ignored, or forgotten.

CERTiFi eliminates these hassles by giving team members a central resource where all the test and certification details of a project are communicated, assigned, and managed – from start to finish.

- Designers can use the web interface to define all the test requirements, acceptance criteria, labeling parameters and more, for every building, floor, room rack, and port
- Project managers can use the web interface to assign testing tasks to team members in the field
- Field managers can use the CERTiFi mobile app to deploy tasks to specific VIAVI test instruments
- Field technicians can immediately proceed to testing using VIAVI test instruments with all the tasks, labels, and acceptance criteria on-board their instrument
- Test results are synchronized into the cloud in real time providing visibility to key team members

Team Member	Resources	Capabilities
Designer	CERTiFi (web interface)	<ul style="list-style-type: none"> • Design projects and test requirements • Manage multiple projects in various stages
Project Manager	CERTiFi (web interface)	<ul style="list-style-type: none"> • Assign tests to field managers • Analyze test data and metrics • Generate certification reports
Field Manager and Technicians	CERTiFi (mobile app) and CERTiFi-enabled VIAVI test instruments See CERTiFi-enabled devices: www.viavisolutions.com/CERTiFi	<ul style="list-style-type: none"> • View assigned test requirements • Deploy tests to VIAVI field instruments • View deployed tasks and test requirements directly on field instruments • Test to configured design requirements • Analyze progress as tests are completed

Increase Workflow with Cloud Connectivity

Cloud connectivity makes enterprise test and certification easier and faster. Team members can access information, collaborate, and communicate in real time, eliminating hassles that cost time and money. Improve your workflow by:

- Removing data entry redundancies between designers, managers and field technicians
- Eliminating the need to transfer test instruments between field and office locations to simply get test results
- Preventing mistakes when entering test and labeling requirements into VIAVI test instruments

Stay Connected with the CERTiFi Mobile App

Field managers are constantly on the go, managing multiple technicians in different locations with limited time. Management responsibilities like gathering results from instruments and sending them back to the main office, or preparing tasks for the next day, typically end up happening in the off-hours when everyone else has clocked out.

With the CERTiFi mobile app, field managers now have everything they need right on their mobile device. Enabling them to manage their crew and maintain communication with the office while on the go. As technicians complete tests in the field, the site lead can wirelessly synchronize their CERTiFi mobile device to capture the results from all field instruments. This allows them to view test results without disrupting their field team's progress.

Receive notifications when new tasks are assigned to you



View test requirements, label configurations, and attached files



Deploy specific tests to field instruments via wireless connection



Test results automatically sync to the cloud

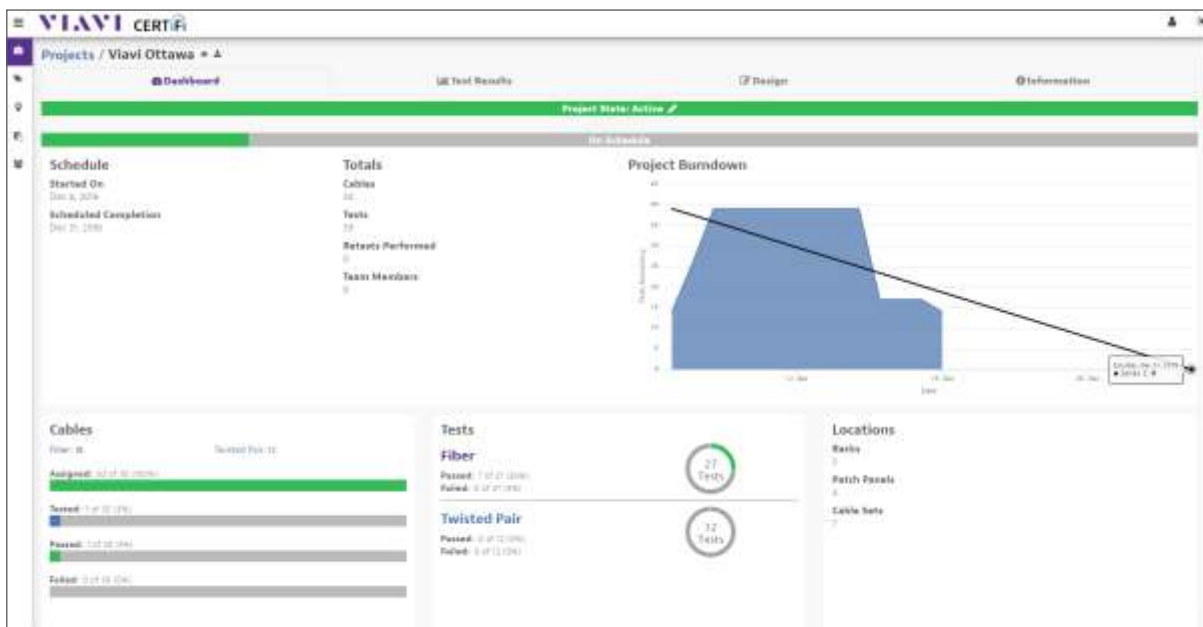


Analyze Project Metrics and Generate Reports

Once test results are synchronized into the cloud, project managers and designers have visibility to the data - allowing them to view real-time progress of all their projects (draft, active, and archived) in the field with dashboard summaries, test results, and other details that allow them to analyze project metrics.

The Dashboard tab gives managers an overview of key project details in a single page view, including:

- Project schedules
- Key dates
- Project burndown chart
- Cable and test totals
- Team members
- Progress tables
 - Assigned vs. not assigned
 - Test vs. not tested
 - Pass vs. fail
- Test locations



The Test Results tab lists all the completed results of the project along with key information associated with the test, including the ability to:

- Filter and sort results by media, type, label, creation date, tech information, instrument, serial number, or test status
- View pass/fail information for each test and compare results to criteria established in the design requirement

Generate reports to share internally or provide to customers for project certification. Reports include:

- Customer information
- Test location, time, and label information
- Pass/fail results
- Acceptance criteria
- Test result details
- Availability in digital or print formats

With an online web interface, mobile application, and VIAVI test instruments all integrated together through a central cloud-based solution, CERTiFi gives every team member the information and resources they need at every stage to complete tasks and certify projects accurately and on time.



📍 203, Ansal Chamber-II, 6, Bhikaji Cama Place, New Delhi-110066
☎ +91 11 26700500/26103358 📠 +91 11 26183229 📠 +91-9212605204
✉ marketing@savitritelecom.com

@2022 Savitri Telecom Services
Product specifications and descriptions in this document are subject to change without notice.
@1122STSACds-CERTiFi-001