

# OneAdvisor 800



Modular test platform designed for use in the installation and maintenance of fiber, wireless and transport applications.

The VIAVI OneAdvisor 800 is the first test tool designed to address the challenges of a modern network field technician. By rolling all the key test capabilities into one portable tester and combining it with easy-to-use test process and reporting automation, VIAVI has equipped wireline and wireless service providers, equipment manufacturers, system integrators, and contractors to meet the work-speed and test coverage requirements for telecommunication networks buildouts and maintenance.

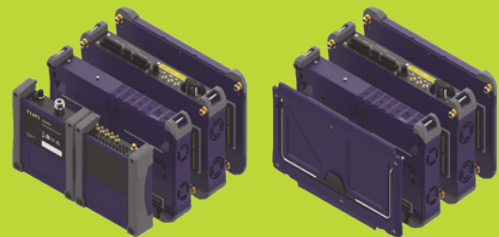


## Key Features and Benefits

- Extended modularity; dual-bay, detachable or plug-in (via Module carrier) capability that can be combined.
- Job Manager for workflow automation for seamless job between all test functions– Enabled by cloud base StrataSync service.
- SAA (Smart Access Anywhere) for Remote Access and coaching.

## Measurements

- RF Spectrum Analyzer and Signal Analyzer for 4G and 5G.
- Singlemode and multimode OTDR.
- DWDM OTDR.
- Bi-directional Optical Loss and ORL Test.
- Optical spectrum analysis.
- DWDM optical channel checker.
- Broadband optical Power level.
- Connector end face inspection.
- Ethernet and protocol testing.
- RF power sensor.
- Cable and Antenna Analyzer.



## General Information

Inputs and Outputs	
USB	2x USB 2.0 Host
Memory Card	1x micro SD
LAN	RJ-45, 1000 Base-T
Audio	Built-in speaker 1x USB-C for Audio output
Display	8", 1280 x 800 resolution
Power	
Connector	Rectangular DC Jack
External DC Input	19 VDC
Power consumption	Mainframe: 10.8W (w/ 70% brightness setting)
Battery	
Type	14.4 V, 6800 mAh (Lithium ion)
Operating time	MF (mainframe) only: > 8hrs
Charging time	100 % charging
	Standard (one battery): > 2:2 hrs
	Up to 80 % charging
	Standard (one battery): > 1:40 hrs
Charging temperature	0 to 45°C (32 to 113°F) ≤ 85% RH
Discharging temperature	-20 to 55°C (-4 to 131°F) ≤ 85% RH
Storage temperature	-20 to 60°C (-4 to 140°F)
Operating Temperature	
0 to 40°C (32 to 104°F)	AC Power with battery charging
-10 to 55°C (14 to 131°F)	Battery discharging condition
Storage temperature	
-20 to 60°C (-4 to 140°F)	
Maximum humidity	
95% RH (noncondensing)	
Memory	
Internal	6.2 GB total, shared by system memory

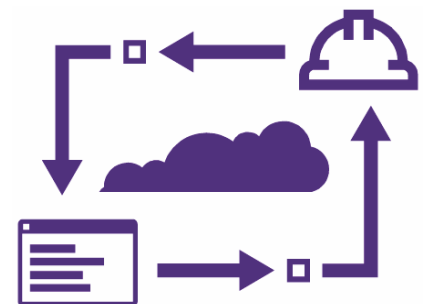
## Managing your workforce, tasks and test data

Test Process Automation (TPA) allows your team to deliver expert-level test results and close projects on the first try, every time. TPA is a closed loop test system that optimizes workflows, eliminates manual, error prone work and automates immediate data reporting for job close out, team progress updates and network health analytics. Execute jobs efficiently to ensure high quality network builds, rapid turn-up/activation, and enhanced operational visibility.

External	Micro-SD: up to 32GB USB flash memory: limited by size of the flash drive Supported file system: FAT, FAT3, ext4
Environmental	
Shock and Vibration	MIL-PRF-28800F
Bench handling	MIL-PRF-28800F
Drop	MIL-PRF-28800F ETSI EN 300 029-2-7
EMC	IEC/EN 61326-1 FCC part 15B ICES-003
Size and weight (Mainframe)	
Weight	2.0 kg (4.4 lb) without module (including battery)
Size (W x H x D)	270 x 170 x 60 mm (10.6 x 6.7 x 2.3 in) without module
Size and weight (Fiber module receptacle)	
Weight	0.8 kg (1.7 lb) without test module
Size	(W x H x D) 270 x 170 x 50 mm (10.6 x 6.7 x 2 in)

## ONA-PMVFL

Power Meter	
Power Level	+10 to -60 dBm
Calibrated wavelength	850, 1310, 1550nm
Connector type	Universal push/pull (UPP)
Visual Fault Locator	
Wavelength	650 nm +/- 15nm
Output power level	< 1mW
Laser safety	Class 2 laser



## Platform Ordering Information

Part	Description
ONA-800A-MF2, ONA-800A-MF2-F, ONA-800A-MF2-T	OneAdvisor 800 Mainframe with Display
ONA-800A-MF2G-T	OneAdvisor ONA-800A Mainframe with Display - no WiFi and Bluetooth Radios
<b>Solution Hardware Modules</b>	
E81FMC1	Fiber module receptacle for E8100-series fiber modules
<b>Software Options for OneAdvisor Platform</b>	
ONA-MF-BT	Bluetooth connectivity
ONA-MF-WIFI	WiFi connectivity
SAA-ADVISOR	Smart Access Anywhere for CellAdvisor Products
<b>Accessories for OneAdvisor Platform</b>	
FBP-SD101	Kit FBP-P5000I Digital Probe FiberChekPro SW Case And Tips
FIT-FC-KIT3	Kit FiberChek Autofocus WiFi Microscope Tips for LC/PC SC/PC and SC/APC Case
G700050125	120 watts DC to DC car cigarette lighter charger adapter
G700050127	OneAdvisor 800 AC/DC Power Adapter 160 W 19 V
PS-330W24V	OneAdvisor 800 AC/DC Power Adapter 330 W 19 V
G700050150	Internal Lithium-ion Battery (92 Wh, 8A)
BAT-96WHR	High Power Internal Lithium-ion Battery (92 Wh, 10 A); ONA-MF2-PEM Power Expansion Module (Additional Lithium-Ion Battery)
ONA-MF2-PEM	Power Expansion Module (Additional Lithium-Ion Battery)
G700050701 ONA800-T-HARDCASE	OneAdvisor Hard carrying case with wheels for full sized modules (large with dividers)
G710550324	External Battery Charger
Jd70050342	Hard Carrying Case With Wheels
EBACKPACK-CASE1, ONA800-T-SOFTCASE	Backpack/large soft carrying case for T-BERD/MTS mainframes and OneAdvisor 800
ONA-800A-BP	Backpack for RF walk test with antenna hook
MP-60A	USB Optical Power Meter with Accessories
ONA-800A-BC	OneAdvisor Back Cover
ONA-800A-HN EHARNESS	OneAdvisor Harness
C2K-EMPTYMOD	Empty module to cover an unused expansion port
ONA-800A-DISPL ONA-800A-DISP-F ONA-800A-DISP-T	OneAdvisor Display
ONA-PMVFL	Power Meter and VFL Mainframe Module for OneAdvisor 800

# 8100-Series OTDR EVO Modules

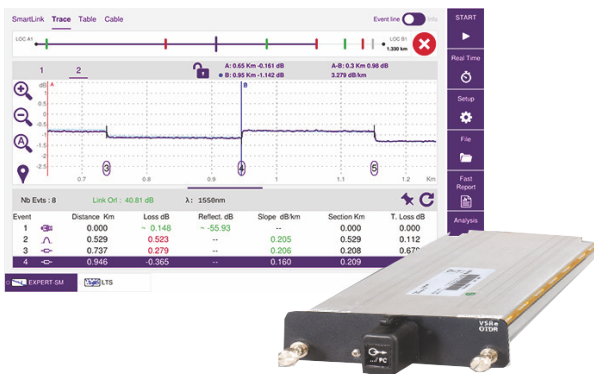
For OneAdvisor 800 Fiber platform

The VIAVI Solutions® 8100-Series OTDR EVO family transforms fiber testing. Connect the OTDR EVO family anywhere on the fiber to characterize single-mode and multimode fibers for commissioning, network upgrades, and troubleshooting with the added insurance of workflow optimization and accurate fiber-link fingerprinting.

The OTDR EVO family's optical performance combined with the One Advisor 800 Fiber's ensures that testing jobs are performed right—the first time.

Standard testing features include:

- Automatic macrobend detection
- Summary results table with pass/fail analysis
- FastReport onboard report generation



## Key Benefits

- Industry-leading dead zone performance for full element event characterization on fiber links
- Includes an integrated power meter, light source, and OTDR in a one-port tool for added flexibility
- Traffic detection avoids risking live signal interference or optical transmitter damage during an OTDR test
- Eliminates OTDR interpretation errors with Smart Link Mapper (SLM) without compromising on test time
- Reduces event loss measurement uncertainty and improves measurement repeatability

## Key Features

- Up to 50 dB dynamic range
- Integrated CW light source and broadband power meter (single-mode wavelengths)
- PON-optimized to test through a 1x128 splitter
- Built-in encircled flux multimode source compliant with IEC 61280-1-4 and TIA-52614-B

## Key Applications

- Metro and ultra-long-haul fiber network characterization
- Advanced FTTH PON network qualification and troubleshooting
- Upgrading core fiber networks to 40 and 100 G
- Remotely monitoring fiber while in or out of service
- Advanced Tier-2 certification for enterprise and data center networks



### Specifications (Typical at 25°C)

General	
General	Weight approx. 500 g (1.1 lb)
Dimensions (W x H x D)	213 x 124 x 32 mm (8.38 x 4.88 x 1.26 in)
Laser safety class (21 CFR)	Class 1
Distance units	Kilometer, meter, feet, and miles
Group index range	1.30000 to 1.70000 in 0.00001 steps
Number of data points	Up to 256,000 data points
Distance Measurements	
Mode	Automatic or dual cursor
Display range	Single-mode: 0.1 – 400 km Multimode: 0.05 – 10 km
Display resolution	1 cm
Cursor resolution	From 1 cm
Sampling resolution	From 4 cm
Accuracy (Excluding group index uncertainties)	Single-mode: $\pm(0.75 \text{ m} + \text{sampling resolution} + 0.001\% \times \text{distance})$ Multimode: $\pm(0.33 \text{ m} + \text{sampling resolution} + 0.001\% \times \text{distance})$
Attenuation Measurements	
Mode	Automatic, manual, 2-point, 5-point, and LSA
Display resolution	0.001 dB
Linearity	Single-mode: $\pm 0.03 \text{ dB/dB}$ Multimode: $\pm 0.05 \text{ dB/dB}$
Threshold	0.01 to 4.99 dB in 0.01 dB steps
Reflectance/ORL Measurements	
Mode	Automatic or manual
Reflectance accuracy	$\pm 2 \text{ dB}$
Display resolution	0.01 dB
Threshold	-11 to -99 dB in 1 dB steps

OTDR Modules	8100A	8100C	8100D
Central wavelength <sup>1</sup>	850 +10/-30 nm; 1300 ±20 nm; 1310 ±20 nm; 1550 ±20 nm; 1625 ±20 nm	1310 ±20 nm; 1550 ±20 nm; 1625 ±10 nm; 1650 +15/-5 nm	1310 ±20 nm; 1550 ±20 nm; 1625 +15/-5 nm; 1650 ±1 nm
Dynamic range <sup>2</sup>	Multimode: 24/24 Single-mode: 40/40/40 dB	47.5/47/47.5/46 dB	50/50/50/48 dB
Pulse width	Multimode: 1 ns to 20 µs Single-mode: 3 ns to 20 µs	2 ns to 20 µs	2 ns to 20 µs
Event dead zone <sup>3</sup>	Multimode: 0.25 m Single-mode: 0.60 m	0.5 m <sup>9</sup>	0.5 m
Attenuation dead zone <sup>4</sup>	2 m	2 m	2.5 m
Splitter attenuation dead zone	25 m after a 15 dB splitter loss (single-mode only)	25 m after a 15 dB splitter loss/60 m after a 18 dB splitter loss	15 m after a 15 dB splitter loss
<b>Power meter</b>			
Calibrated wavelengths <sup>5</sup>	N/A	1310/1490/1550/1625 nm	1310/1490/1550/1625 nm
Power range		-3 to -55 dBm	-5 to -55 dBm
Accuracy <sup>6</sup>		±0.5 dB at -30 dBm	±0.5 dB at -30 dBm
<b>Continuous wave light source<sup>7</sup></b>			
Wavelengths	850/1300/1310/1550/1625 nm	1310/1490/1550/1625 nm	1310/1550/1625 nm
Output power	0 dBm	-3.5 dBm	0 dBm
Stability	±0.2 dB @25°C over 1 hr	±0.1 dB at 25°C over 1 hour	±0.1 dB at 25°C over 1 hour
Operating modes <sup>8</sup>	CW (single-mode only), 270 Hz, 330 Hz, 1 kHz, 2 kHz, Twintest	CW, 270 Hz, 330 Hz, 1 kHz, 2 kHz, TWINtest	270 Hz, 330 Hz, 1 kHz, 2 kHz, TWINtest

1. Laser at 25°C and measured at 10 µs.

2. The one-way difference between the extrapolated backscattering level at the start of the fiber and the RMS (SNR=1) noise level, after 3 minutes averaging using the largest pulse width.

3. Measured at ±1.5 dB below the peak of an unsaturated reflective event using the shortest pulse width.

4. Measured ±0.5 dB from the linear regression using an FC/UPC reflectance and the shortest pulse width.

5. 1625 nm is not available on the 8138C-65 version.

6. At calibrated wavelengths.

7. At calibrated wavelengths; multimode source (850 nm) is compliant to the IEC 61280-1-4 standard related to the encircled flux.

8. Subtract 3 dB when in modulation mode (270 Hz/330 Hz/1 kHz/2 kHz).

9. Measured at 1.5 dB below the peak of an unsaturated 27 dB reflective event using the shortest pulse width.

## Platform Ordering Information

Description	Part Number
<b>8100A Modules</b>	
850/1300/1310/1550 nm OTDR module <sup>2</sup>	E8146A
850/1300/1310/1550/1625 nm OTDR module <sup>2</sup>	E8156A
<b>8100C Modules</b>	
1550 nm OTDR module <sup>1</sup>	E8115C
In-service 1625 nm OTDR module <sup>1</sup>	E81162C
In-service 1650 nm OTDR module <sup>1</sup>	E81165C
1310/1550 nm OTDR module	E8126C
1310/1550/1625 nm OTDR module	E8136C
<b>8100D Modules</b>	
1550 nm OTDR module <sup>1</sup>	E8115D
In-service 1625 nm OTDR module <sup>1</sup>	E81162D
In-service 1650 nm OTDR module <sup>1</sup>	E81165D
1310/1550 nm OTDR module	E8126D
1550/1625 nm OTDR module <sup>1</sup>	E8129D-62
<b>Universal Optical Connectors</b>	
Straight connectors	E8136D
8° angled connectors	EUNIPCFC, EUNIPCSC, EUNIPCST, EUNIPCDIN

1. Source and power meter not available on these versions.  
2 . APC connector not available on these versions.



### Quality Testing

Our products undergo rigorous quality testing before shipment to ensure their excellence.



### Packaging

We meticulously package our products to guarantee they arrive at their destination in pristine condition.



### Transport

We prioritize swift transportation, minimizing your waiting time to receive your order promptly.



### Delivery

Our delivery service is designed to bring the products you've ordered directly to your doorstep, tailored to your specific preferences.



- 📍 203, Ansal Chamber-II, 6, Bhikaji Cama Place, New Delhi-110066  
 📞 +91 11 26700500/26103358 📠 +91 11 26183229 📠 +91-9212605204  
 📧 marketing@savitritelecom.com

@2024 Savitri Telecom Services

Please note that product specifications, size, and shape are subject to change without prior notice. As a result, the actual appearance of the product may vary from what is shown in the picture. However, we take pride in our ability to customize products to meet unique specifications, ensuring utmost customer satisfaction.

@0524STSTMDs-ONA800-EVOM-002